



LOIS Rail User Manual

www.softrol.com

Support Information:
<http://Support.Softrol.com>

Table of Contents

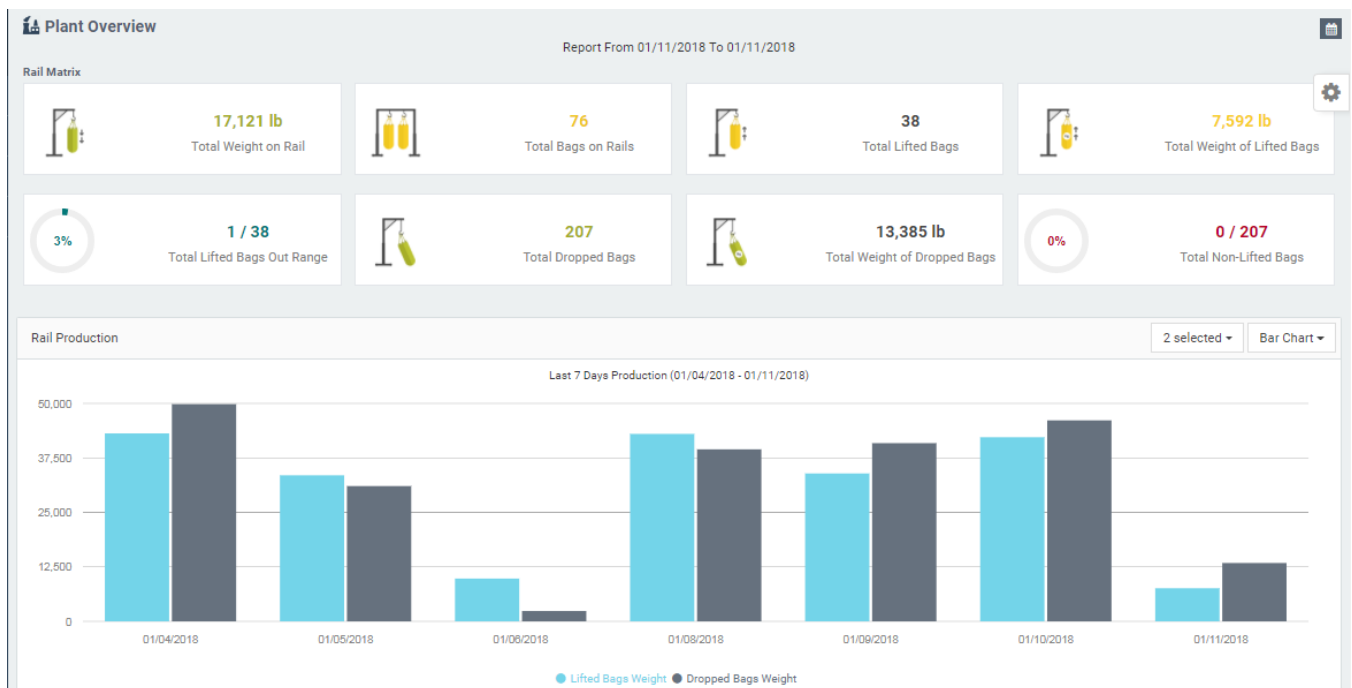
LOIS Introduction	1
Plant Overview	1
Dashboards	2
Reports.....	3
LOIS Navigation	4
Account Settings	4
LOIS Data	6
Rail Data	7
LOIS Reports	8
Rail Totals Reports	8
Rail Dashboard	8
Production Summary Report	9
Lifted Bags Report.....	10
Dropped Bags Report.....	11
Non-Lifted Items Report	11
Rail Logistics Reports.....	12
Soil Storage Report	12
Rail Diagnostics Reports.....	13
Edited Bag Report	13
Auto/Manual Status Report.....	13
Rail Configuration/Informational Reports	14
Item Master Report	
Lift Plan Summary Report	
Lift Plan History Report	
Wash Plan Summary Report	
Wash Plan History Report	

LOIS Introduction

Softrol's Laundry Operation Information System (LOIS) enables people throughout your organization to view real-time and historical data anywhere, anytime. This will help improve decision making which may ultimately result in greater profitability. Each part of your laundry managed by Softrol applications gathers information which is consolidated in LOIS. LOIS dashboards allow users to view today's production information at a glance. With drill down capability for date ranges, more extensive reports can be viewed for comparisons and past production performance.

Plant Overview

The Plant Overview provides a high-level overview of the production facility. An authorized user can quickly see information at a corporate level or for a specific plant. The information can be for a single day or a date range. The default date is the current day so a quick overview of today's data can be viewed. Each area of the plant can be quickly assessed to see if there are any areas needing immediate attention. Graphs can be shown for any area within your plant running Softrol applications such as Wash Aisle, Dryer, or Rail Systems.



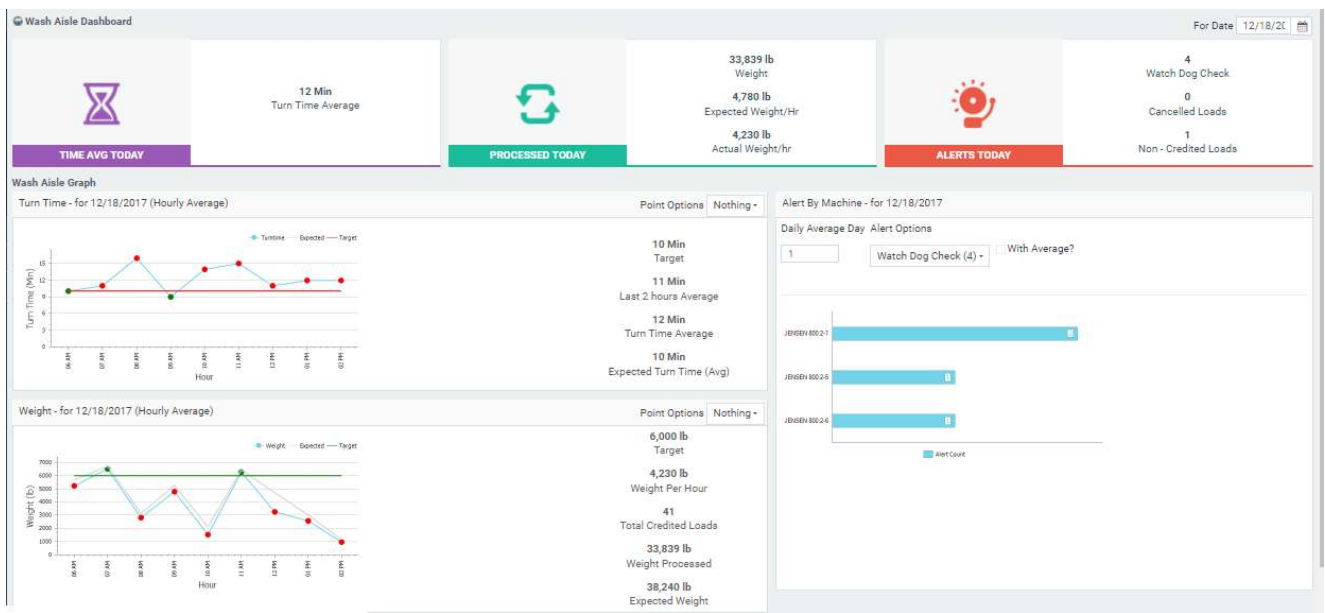
From the Plant Overview screen, a user can drill down for additional information by double clicking on a widget.

Dashboards

Are you looking for more information than is provided in the Overview? This is done by going to My Dashboard and selecting the Dashboard to get specific information on an area of the plant. Multiple Dashboards are available depending on what areas of your laundry are managed by Softrol solutions. The Dashboards provide today's current, actionable information specific to each area of your laundry. Dashboards include:

- Rail
- Wash Aisle
- Dryer
- Garment Sort
- Utility
- Productivity
- Efficiency

Sample Wash Aisle Dashboard:

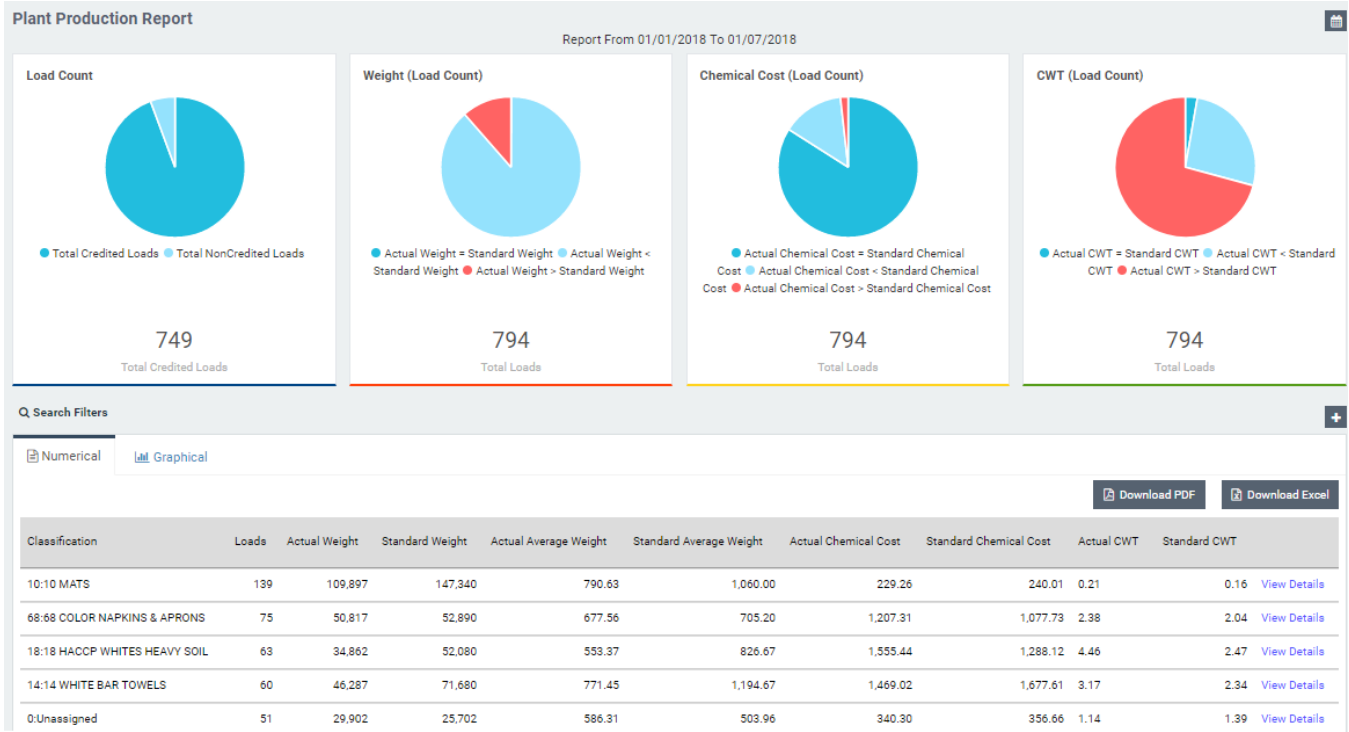


If additional details are needed, the user can go to specific reports.

Reports

Detailed information is available through LOIS Reports for each area of your plant run with a Softrol application. Data collected throughout Softrol solutions is used to provide detailed reports for each area of your facility. These are organized in such a way to answer questions regarding cost, efficiency, production totals and diagnostics. Reports can be seen in graphical or table form. Reports can be highly customized by each user 'on the fly' using various filters and selection criteria they specify. This allows them to see information they need when they need it without having to ask someone else for it. Many can be downloaded in PDF format or to an Excel spreadsheet for further analysis.

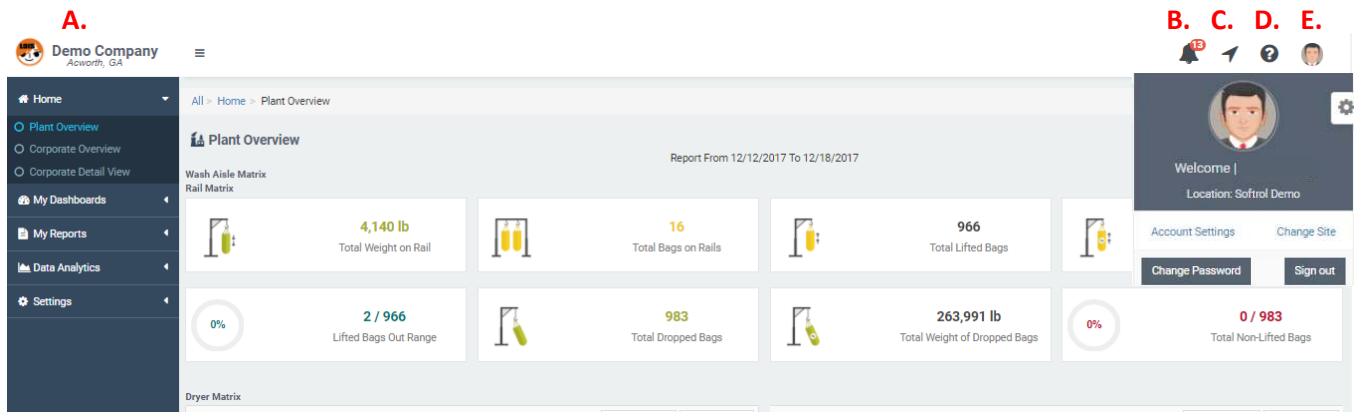
Sample Plant Production Report:



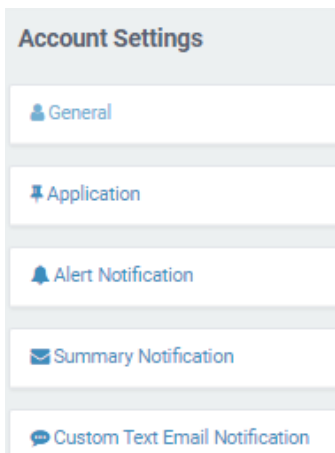
LOIS Navigation

Once your user ID and password are entered in LOIS, you come to your personal Home page.

- A.** This identifies which plant location is being viewed
- B.** Any notifications are indicated here
- C.** Allows you to change location if you are authorized to view multiple facilities
- D.** Takes you to LOIS Help
- E.** Takes you to your Profile and Account Settings



Account Settings



Account Settings allow each user to customize LOIS.

Manage User Name, Email and Password

Set user default Favorites

Set parameters, identify recipients and the reports they are to receive for Alert Notifications

Define data range, frequency and recipient(s)

Define when custom email notifications should be sent and who will receive them

Account Settings

[General](#)

Application

♥ My Favorite Site
Softrol Demo ▾ ⓘ

★ My Favorite Report
Home > Plant Overview ▾ ⓘ

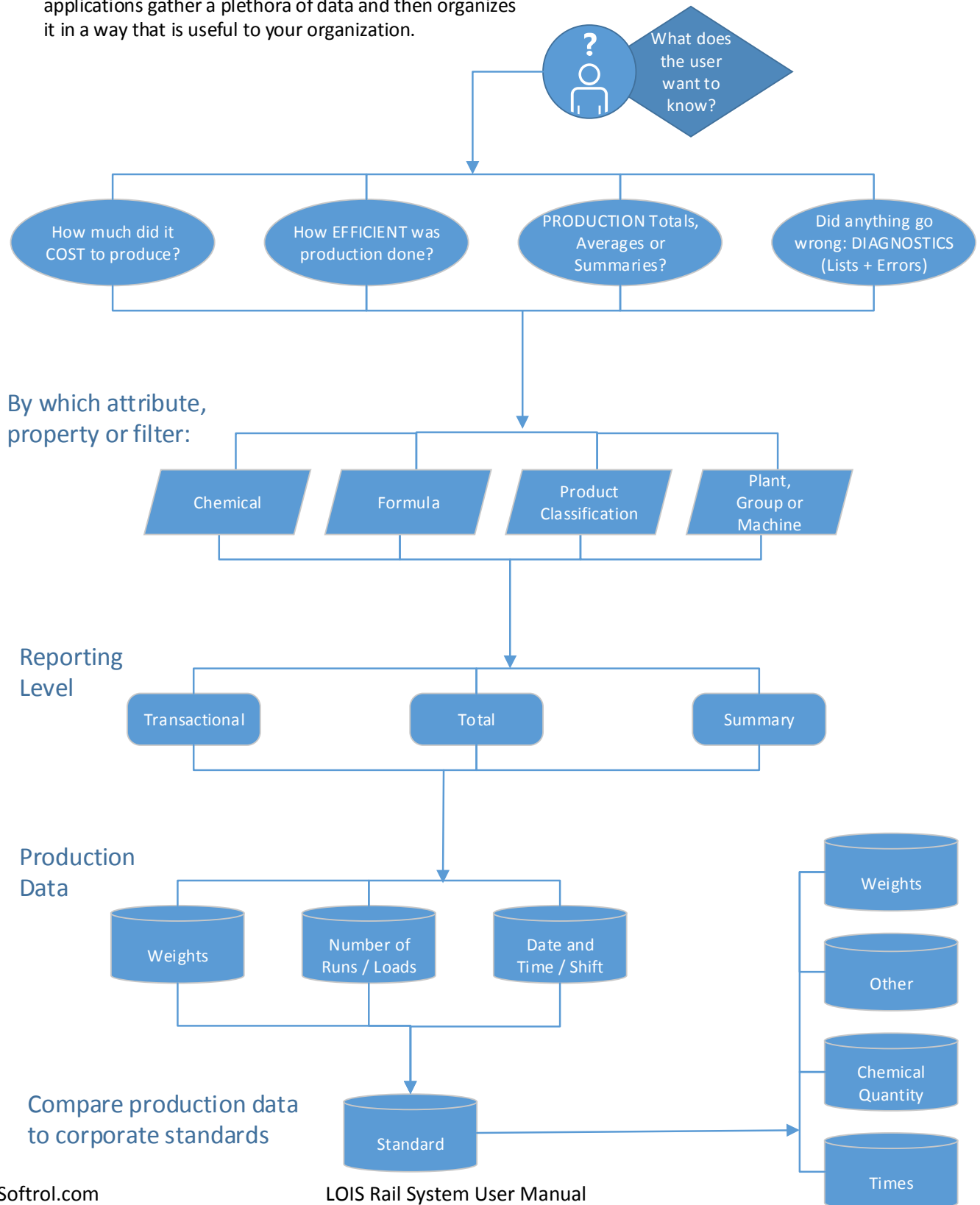
📅 My Favorite Date
Last 7 Days ▾ ⓘ

The Application tab allows the user to define their Favorites

“My Favorite” are the defaults you set which LOIS remembers to personalize the Plant Location, Report or Dashboard, and Date(s) used on your Home page.

LOIS Data

Any report is only as good as the data behind it. Softrol applications gather a plethora of data and then organizes it in a way that is useful to your organization.



Rail Data

Data from the automated Rail System is assigned to each bag and consolidated into Loads as product moves through your plant.

Item	△	Loads	Bags	Avg. Weight By Bag	Avg. Weight By Load	Weight	Non Lift	
Bar Swipe		8	56	192	1,346	10,775	0	View Details
Black Apron Fold		2	10	195	977	1,954	0	View Details
Black Napkins		7	35	182	911	6,378	0	View Details
Blankets		6	30	177	886	5,321	0	View Details

- **Item:** Soiled item processed through the plant
- **Loads:** Number of loads completed of a particular item over specified date(s) or shift(s)
- **Bags:** Total number of bags processed
- **Avg. Weight By Bag:** Average bag weight of processed item
- **Avg Weight By Load:** Average load weight of processed item
- **Weight:** Total weight processed of particular item
- **NonLift:** Nonlifted items processed in the wash aisle without using the rail system

Each Washer Load starts with soiled product that has been sorted into bags that are often delivered to the Wash Aisle through an automated rail system. The data associated with each bag includes the following:

Date	Item	Bags	Lot	Machine	Weight (lb)	NonLifted
12/12/2017 08:29:25 AM	Black Napkins	5	709745	2	906	0
12/12/2017 02:09:15 PM	Black Napkins	5	710309	2	998	0
12/12/2017 02:19:21 PM	Black Napkins	5	710538	2	876	0
12/12/2017 05:26:29 PM	Black Napkins	5	710742	2	968	0
12/12/2017 11:33:26 PM	Black Napkins	5	711044	2	885	0
SUMMARY					4,633	

- **Date:** The date and time the soiled product was entered into your system
- **Item:** Description of the item held in the bag
- **Bags:** Number of bags comprising this Load
- **Lot:** Unique lot number (similar to serial number) assigned to a particular bag
- **Machine:** Specific washer used to launder the product
- **Weight:** Weight of soiled product in the bag
- **NonLifted:** All of the items moved to wash aisle without using the rail system (e.g., mats, mop heads)

Rail Reports

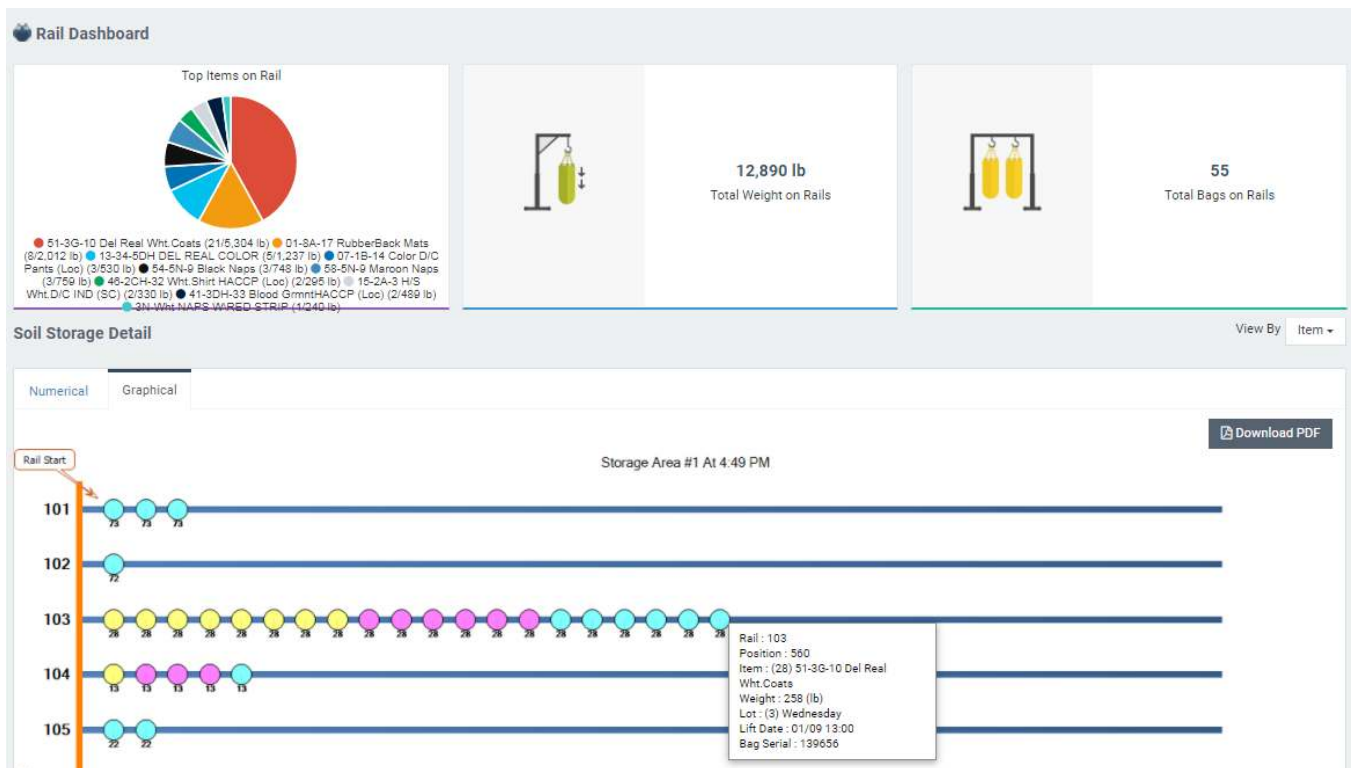
There are multiple ways to get and display your data with LOIS Rail Reports. Although most Rail Reports provide you with multiple tiers of information, they typically fit into one of three information categories: Totals, Logistics, and Diagnostic.

Note: Depending on your plant and its equipment, you may not have access to all of the reports listed below.

Rail Totals Reports

- I. **Rail Dashboard** provides current, actionable rail system information. The Rail Dashboard also includes the Soil Storage Detail Report which is described later. The information includes:

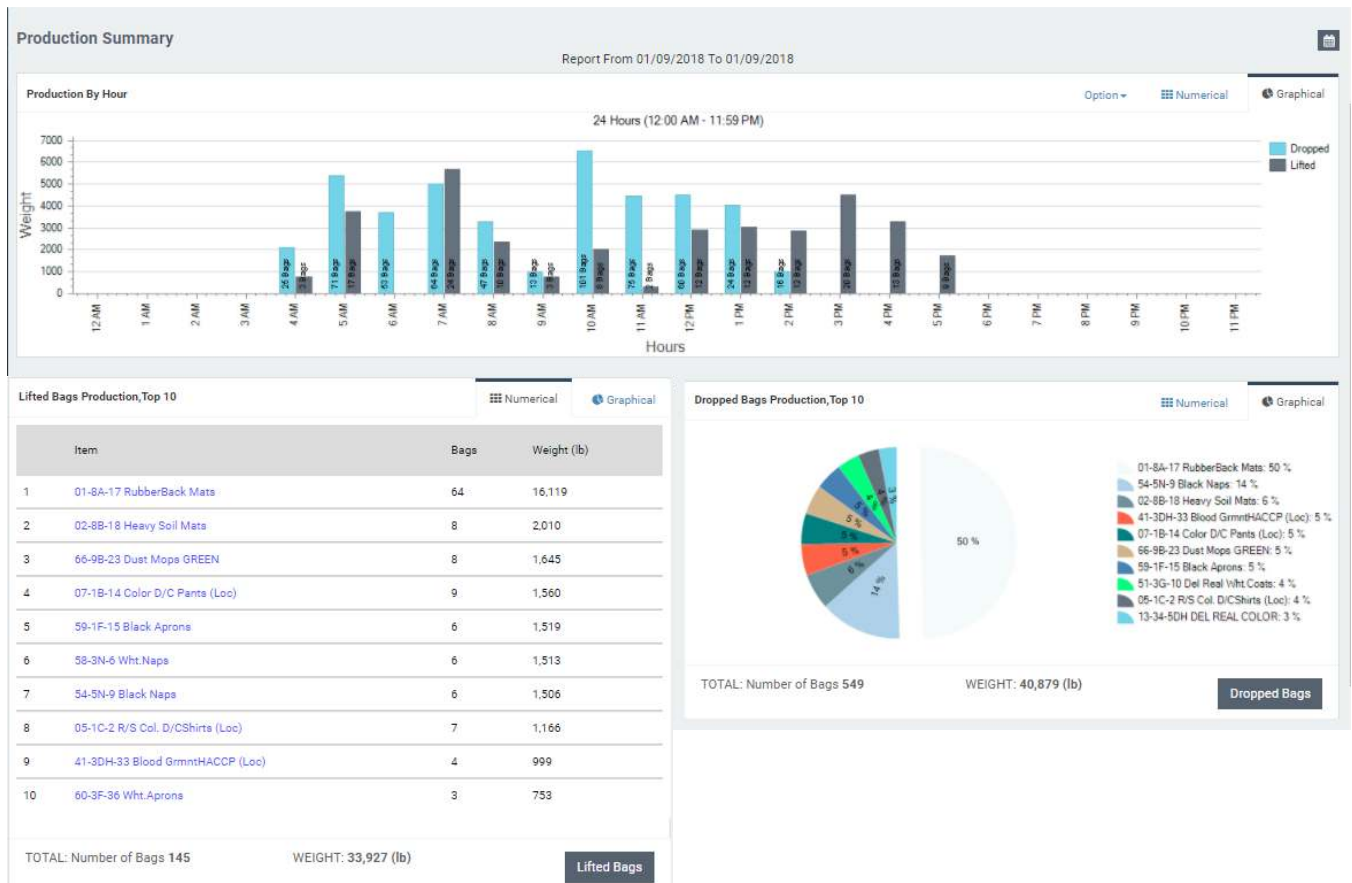
- Rail top 10 items
- Total weight of all bags on rails
- Number of bags on rails



Glossary:

- **Top Items:** Top ten items currently stored on rail
- **Total Weight on Rails:** Weight of all bags currently in storage on rail
- **Total Bags on Rails:** Current bag count on storage rail

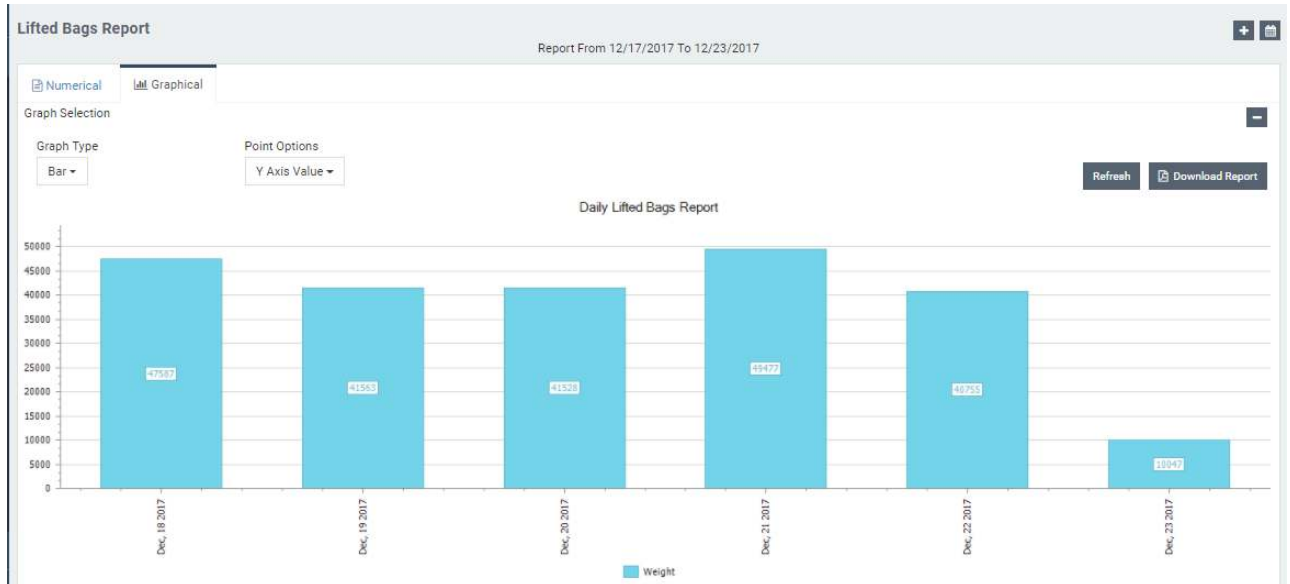
- II. **Production Summary Report** provides graphical and numerical data of your production totals. You can quickly see your daily totals for your lifted and dropped bags. Next, get numerical and graphical data on your Top Ten Lifted and Dropped items. If you want more detail, click on any of the links to go to the Lifted or Dropped Bags report. The Hourly Production shows the last twenty-four hours of production. You can click "Option" to get data for a specific shift.



III. **Lifted Bags Report** gives you multiple views of the bags lifted into the system for the reporting period. At the top level, you can group your lifted bags by the day, week, month, or year. You can also choose the items included in the report. The system flags any bags lifted outside their standard weight range.

You can increase the granularity by clicking on a date (e.g., day, week, month, or year). The report takes you to another view that details the items lifted for the date. Clicking the item takes you to the bag level detail where the report details:

- Exact date and time of lift
- Lift number
- Bag serial number
- Bag weight
- The minimum and maximum weights for that item



Date	Lift Number	Bag Serial Number #	Weight (lb)	Min Weight (lb)	Max Weight (lb)
01/11/2018 04:23:49 AM	1	139729	240	240	260
01/11/2018 04:25:34 AM	1	139730	253	240	260

- IV. **Dropped Bags Report** gives detailed information about the bags sent to the wash aisle during the reporting period. At the top level, dropped bags can be grouped by the day, week, month, or year; you can also choose the items included in the report. The report includes any non-lifted items added to the system. The report can be viewed as a graph or numeric table.

Day	Number Of Bags	Weight (lb)	
Mon 12/18/2017	818	53,059	View Details
Tue 12/19/2017	617	47,554	View Details
Wed 12/20/2017	720	51,666	View Details
Thu 12/21/2017	594	47,345	View Details
Fri 12/22/2017	501	36,415	View Details
Sat 12/23/2017	48	5,250	View Details
SUMMARY	3,298	241,289	

Granularity can be increased by clicking on a date (e.g., day, week, month, or year). The report takes you to another view detailing the items dropped for the date. This report can be ordered by any of the columns. It can also be downloaded to Excel for further evaluation.

Item	Loads	Bags	Avg. Weight By Bag	Avg. Weight By Load	Weight	Non Lift	
01-BA-17 RubberBack Mats	82	316	65	252	20,670	0	View Details
07-1B-14 Color D/C Pants (Loc)	24	96	42	169	4,068	0	View Details
54-SN-9 Black Naps	20	41	122	252	5,041	0	View Details
05-1C-2 R/S Col. D/CShirts (Loc)	18	65	47	170	3,065	0	View Details

Clicking the item [\[View Details\]](#) takes you to the load level detail:

Date	Item	Bags	Lot	Machine	Weight (lb)	NonLifted
01/09/2018 06:31:53 AM	WHITE TABLE	4	8	9	916	0
01/09/2018 06:50:16 AM	WHITE TABLE	4	8	1	904	0

Clicking on the number in the Bags column takes you to the Wash Detail for the load:

Wash Detail			
For Drop ID: 42735			
Date	1/9/2018 7:20:49 AM		
Machine	2		
Weight (lb)	466		
Bags Detail			
Item	Weight (lb)	Bag Serial	Lift Time
(10) WHITE TABLE	231	114745	1/8/2018 3:40:44 PM
(10) WHITE TABLE	235	114756	1/8/2018 4:07:14 PM

- V. **Non-Lifted Items Report** details all items moved to wash aisle without using the rail system. For the accuracy of production reporting, items not lifted into the rail system must be manually add. Manually adding these items keeps your reporting accurate. The Non-Lifted Items Report provides you with a detailed list of the items your production staff adds manually to the system. The report contains item number, item name, number of loads, total weight and total bags.

- I. **Soil Storage Report** allows you to view your soil storage graphically by rail or by item. No matter which view you choose, the report is a fast way to take a quick inventory of your current soil storage. Opening the report takes a "snapshot" of the current storage. Periodically refresh the page to keep the data current. Each circle represents a bag. By clicking on it, a popup window appears with detailed information about the bag.



Selecting [\[Numerical\]](#) brings up a table sorted by item number. More information can be viewed by selecting [+](#)

Soil Storage Report

View By

Item

Numerical

Graphical

Download PDF

Download Excel

Item	Item Name	Sling Count	Total Weight
<div>+</div>	3 07-1B-14 Color D/C Pants (Loc)	11	1,953 lb
<div>-</div>	4 08-1B-14 Color D/C Pants (SC)	7	1,147 lb

Rail No.	Bag No.	Item	Lot	Bag Weight	Lift Date	Bag Serial
106	1	4 : 08-1B-14 Color D/C Pants (SC)	2 : Tuesday	163 lb	01/11 06:13	139757
106	2	4 : 08-1B-14 Color D/C Pants (SC)	2 : Tuesday	164 lb	01/11 06:16	139758

- I. **Edited Bag Report** details all of the bags that had their data changed after their addition into the system. Bags need their information changed occasionally, but a high number of edited bags can indicate a problem on the production floor. A periodic look at the edited bag report may help you identify a problem early. The Report list allows you to see the volume of changes, but clicking on the [View Details](#) opens a detail page. The Detail highlights the changes using red text.

Edited Bags Report			
Report From 01/11/2018 To 01/11/2018			
Download PDF Download Excel			
Drag a column header here to group by that column			
Date/Time	Action	Rail Number	Bag Number
1/11/2018 4:41:49 AM	2 : Edited Bag	102	1
1/11/2018 4:42:51 AM	2 : Edited Bag	102	2
1/11/2018 5:07:25 AM	3 : Deleted Bag	134	1
1/11/2018 5:07:54 AM	1 : Inserted Bag	134	1

Detail

Date / Time: 1/11/2018 4:42:51 AM			Action: Edited Bag		
	Original	Edited		Before	After
Area	Storage Area #1	Storage Area #1	Item	(73) 54-5N-9 Black Napkins	(26) 64-3E-5 Wht. Ind. Twls
Rail	2	102	Lot	4	4
Bag	2	2	Cust	1	1
			Dest 1 (Load Weight)	102	102
			Bag Weight	251	251
			Bag Serial	139736	139736
			Dest 2 or 3 (Load Serial)	104103	104103
			Buffer	0	0
			Bags	0	0
			Washer	0	0

II. Auto/Manual Status Report

For your system to provide accurate reporting, the production staff must keep the system running in auto. If workers switch the system off (manual mode), reporting suffers from inaccurate data. To verify the system's use, periodically review the Auto/Manual Status Report. The report provides a graphical and a numerical report.

- I. **Item Master Report** lists the item number, item name, preferred storage rails, minimum and maximum weight, and desired weight.

Item Master							Download PDF	Download Excel
Drag a column header here to group by that column								
Item	Item Name	Primary Rail	Secondary Rail	Tertiary Rail	Minimum Weight	Maximum Weight	Desired Weight	
1	Ivory Table Tops	101	101	101	240	260	250	
2	White Napkins	102	101	101	260	280	270	
3	Colored Napkins	103	101	101	260	280	270	

- II. **Lift Plan Summary Report**
- III. **Lift Plan History Report**
- IV. **Wash Plan Summary Report** allows each facility to view by day the Wash Plan to what was actually washed. Numbers in red represent the number of loads short of plan for the day.
- V. **Wash Plan History Report** shows how well the Wash Aisle is keeping to the Wash Plan. The Wash Plan allows each facility to schedule their Wash Plan by Machine, Item, Day, and Time. This can help maximize the Wash Aisle, Dryers and Finishing area by insuring product is processed in the correct order based on expected run time.

Machine	Item	Run Time (Min)	Date	Plan Time
1	LS SHEETS	68	01/10/2018	07:00:00 AM
2	MATS	35	01/10/2018	07:00:00 AM
3	INDUSTRIAL PANTS	57	01/10/2018	07:00:00 AM
4	INDUSTRIAL SHIRTS	57	01/10/2018	07:00:00 AM
5	INDUSTRIAL SHIRTS	57	01/10/2018	07:00:00 AM
6	JEANS	57	01/10/2018	07:00:00 AM
2	MATS	35	01/10/2018	07:35:00 AM